

**MODEL:
SK156-SS**

QUICK INFO

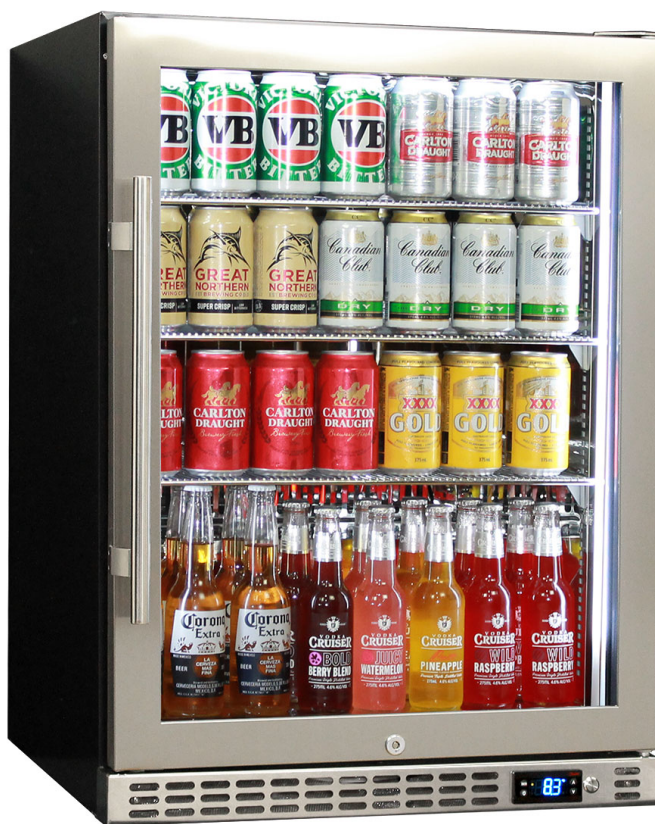
Quiet running low energy under bench front venting glass door bar fridge. Unit has triple glazed LOW E glass to prevent condensation, the door is reversible with lock and brand parts include a quality German Danfoss electronic controller and German EBM fans for reliable operation.

Switchable 'colour' LED light can be either blue or white, units have 3 x full 'soft' strips on sides and inner top for great lighting effect.

This unit is also available in black door frame and grill (Model SK156 B), and heated glass versions if in stock (models SK156R HD & SK156L HD), and solid door version, model Sk156 SD

PARTS AND ENERGY INFO

- Cyclopentane foaming
- Energy saving compressor
- German Danfoss ECO Controller
- German energy saving EBM fans
- LED lighting
- LOW E glass
- R600 100% ozone safe gas
- Triple Glazing
- Danish Danfoss ECO Controller
- Noctua Silent and Quiet Fans
- Meanwell Transformer From Taiwan



SPECIFICATIONS

Capacity (litres)	140
Holds (cans)	144
Noise Level	43
Consumption	1.21Kwh/24Hrs
Unit dimensions (WxDxH)	595 x 586 x 840
Lockable	Yes
Gross weight	46 kg



**Specifications and price of this product may change at any time
**For more information about this product please call us or visit our website.