

HEATSTRIP® 

Outdoor heating never looked so good
NEW PRODUCTS





HEATSTRIP[®] CLASSIC

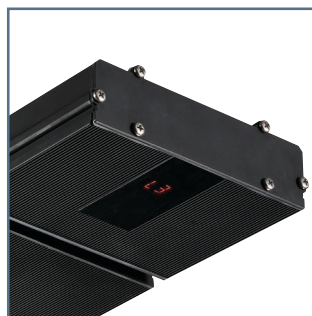
WITH REMOTE

Remote controlled Classic slimline electric, all-black heating solution for your undercover, protected alfresco area, balcony, patio or verandah. Also suitable for indoor use.

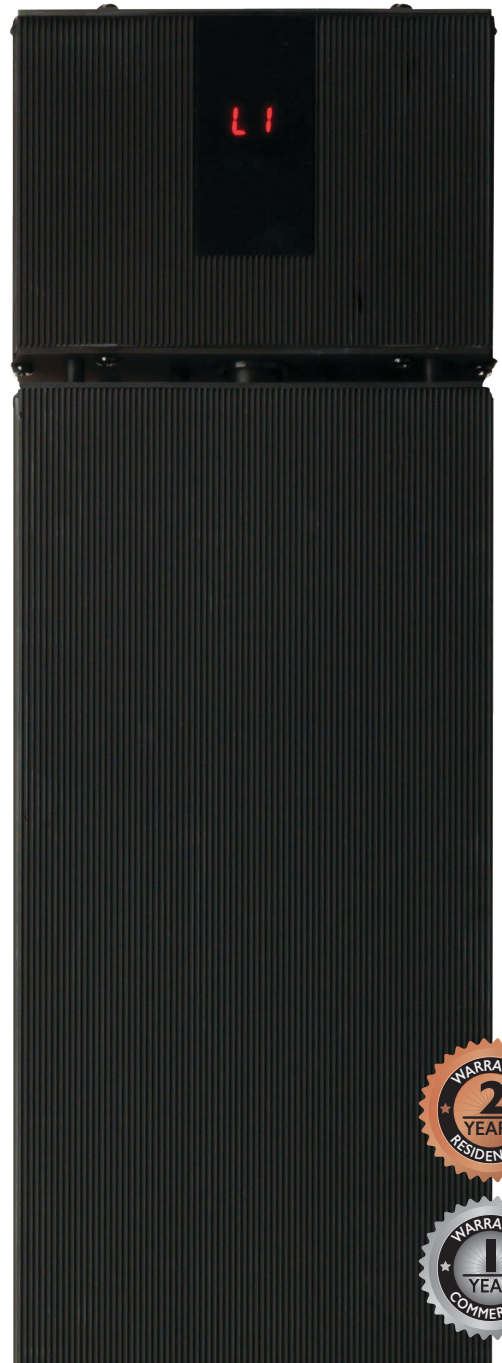
- Indoor/outdoor electric radiant heater
- 2 models available THH2400AR (2400W) & THH3200AR (3200W)
- New LED control panel and remote control with easy on/off functionality, 3 heat levels and adjustable 0-24 hour timer
- Convenient DIY installation for the 2400W model. 3200W model must be hard-wired.
- Corrosion-resistant for most environments
- Standard mounting bracket included can be used for wall or ceiling mounting. Bracket can also be used to suspend the heater using chains or wires.
- Ideal mounting height 2.1-2.3m. Max mounting height 2.7m



Remote for easy power on/off & heat control.



Optional mounting accessories available, including flush mount kits and extension poles.



Model	Running Costs**	Power	Current	Dimensions	Weight	Lead Length	Plug	Heating Area	Standard Bracket	Flush Mount Kit	Extension Poles
THH2400AR	60c / hr	2400 Watts	10 amps	1371x165x48mm	7 kg	1000 mm	Yes	4-5 m ²	ZBRAC-113B	THHAC-013	THYAC-047 (300mm) THYAC-048 (600mm)
THH3200AR*	80c / hr	3200 Watts	13.3 amps	1780x165x48mm	9 kg	1000 mm	No	5-6 m ²	ZBRAC-113B	THHAC-014	THYAC-049 (900mm) THYAC-050 (1200mm)

Materials of construction: High temperature all-black ceramic coated extruded alloy. IP55 rated.
** Running cost based off \$0.25/kWh energy tariff.

*This unit must be installed by a licensed electrician..

HEATSTRIP[®] ENHANCE

WITH REMOTE & APP



This sleek, slimline heater with a smooth German Schott glass front is the perfect all-black electric heating solution for instant performance. Easily control the heater with the included remote and app, with a timer ranging from 0-24 hours and 3 different heating levels. Whether you need localized or direct spot heating indoors or outdoors, this heater is sure to meet your needs.

- Indoor/outdoor electric radiant heater.
- THG3200BA (3200W).
- Remote, app plus smart home connectivity. Compatible with Google and Amazon smart home platforms. Bluetooth & WIFI.
- Remote control provides 3 heat levels with adjustable timer options from 0-24 hours with the touch of a button.
- 3200W model must be hard-wired and installed by a licensed electrician.
- Ideal mounting height 2.1-2.5m. Max mounting height 2.7m.



WITH REMOTE,
APP CONTROL
& SMART HOME
CONNECTIVITY
BLUETOOTH
& WIFI



Designed for minimal light emissions and even, directional heat distribution.



Suitable for wall & ceiling mounting or suspension via chains or wires.

Model	Running Costs**	Power	Current	Dimensions	Weight kg	Lead Length	Plug	Heating Area	Standard Bracket	Flush Mount Kit
THG3200BA*	80c / hr	3200 Watts	13.3 amps	1020x187x76mm	10 kg	1000 mm	No	8-12 m ²	ZBRAK-154	THGAC-002

Materials of Construction: (Face) German schott glass (Casing) High temperature black coated extruded alloy . IPX5 Rated. ** Running cost based off \$0.25/kWh energy tariff.

*This unit must be installed by a licensed electrician